

# Winding Electronics Transformers – ATWPEF Series

Operating Temp. : -40°C~+150°C(Including self-heating)



## PRODUCT IDENTIFICATION

<b>A</b> ①	<b>T</b> ②	<b>W</b> ③	<b>P</b> ④	<b>EF</b> ⑤	<b>XX</b> ⑥	<b>XX</b> ⑦	<b>XX</b> ⑧	<b>B</b> ⑨	<b>XX</b> ⑩	<b>XX</b> ⑪	<b>T</b> ⑫
① Product Type. A Automotive		② Type. T Transformer		③ Structure W Wire Wound		④ Feature Code P or Power		⑤ Core Type EF		⑥ Core Length (Typ.) XX XX mm	
⑦ Bobbin Length (Typ.) XX XX mm		⑧ Product Height(Typ.) XX XX mm		⑨ Style B Horizontal& SMD		⑩ Number of Coil 1 ~ 9		⑪ Design Code 00~99, A0~Y9		⑫ Packing T--Taping, P--Pallet, B--Bulk	

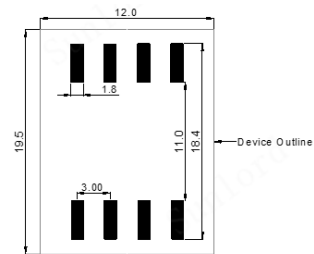
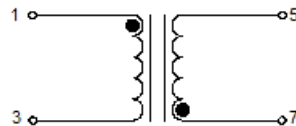
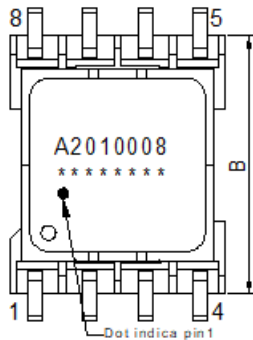
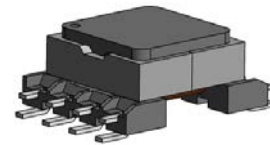
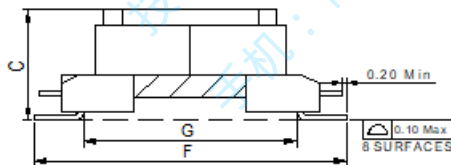
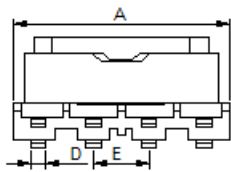
## FEATURES

- High reliability and sensitivity
- High current, low loss
- AEC-Q200 verified

## APPLICATIONS

- Motor drive
- Switch power supply

## ATWPEF101406 Series

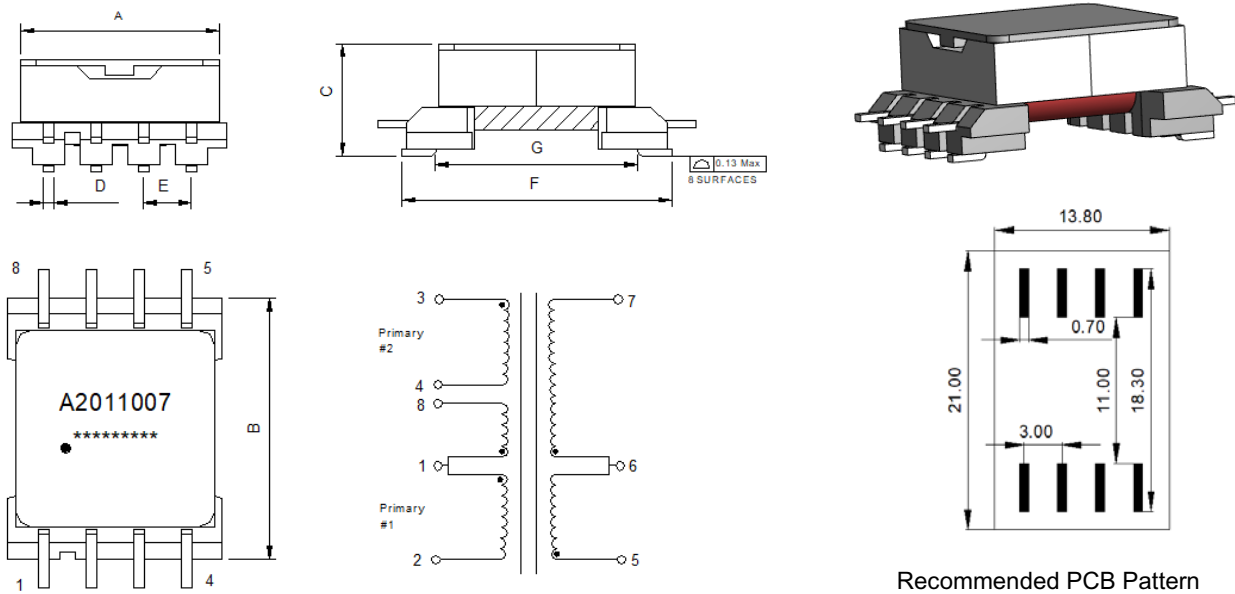


Recommended PCB Pattern

Unit: mm

A	B	C	D	E	F	G
12 Max.	14 Max.	7.5 Max.	SQ.0.80±0.10	3.00±0.20	17.50 Max.	11.60 Ref.

## ATWPEF122007B Series

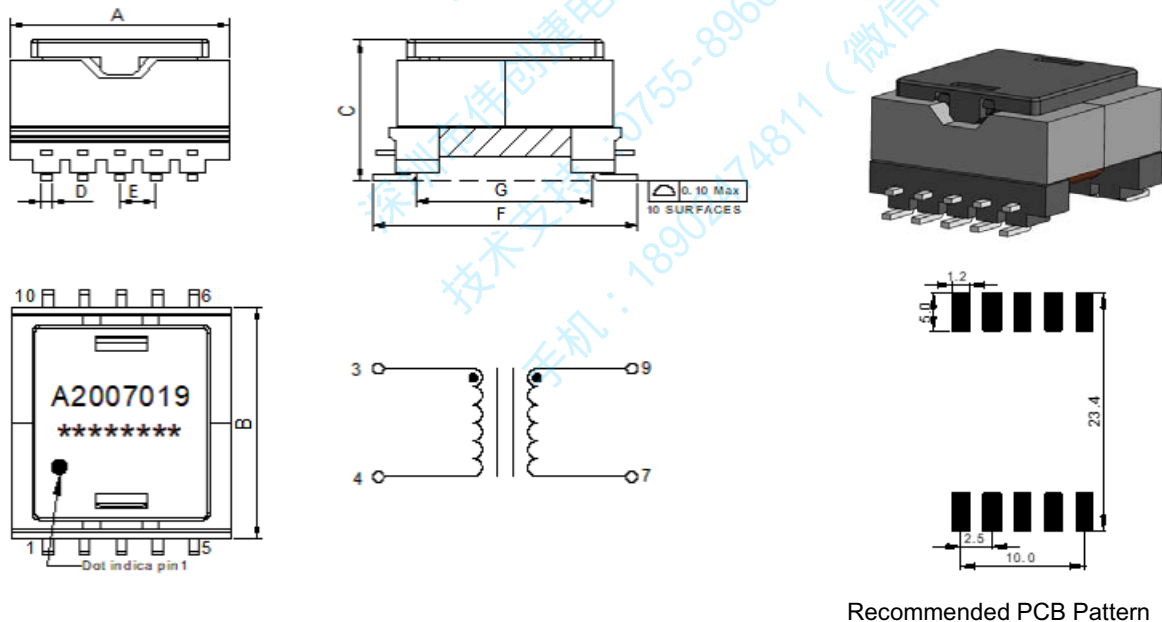


Recommended PCB Pattern

Unit: mm

A	B	C	D	E	F	G
12.50±0.40	17.00 Max.	6.0 Max.	0.70±0.10	3.00±0.20	17.0±0.45	12.7 Ref.

## ATWPEF151513B Series

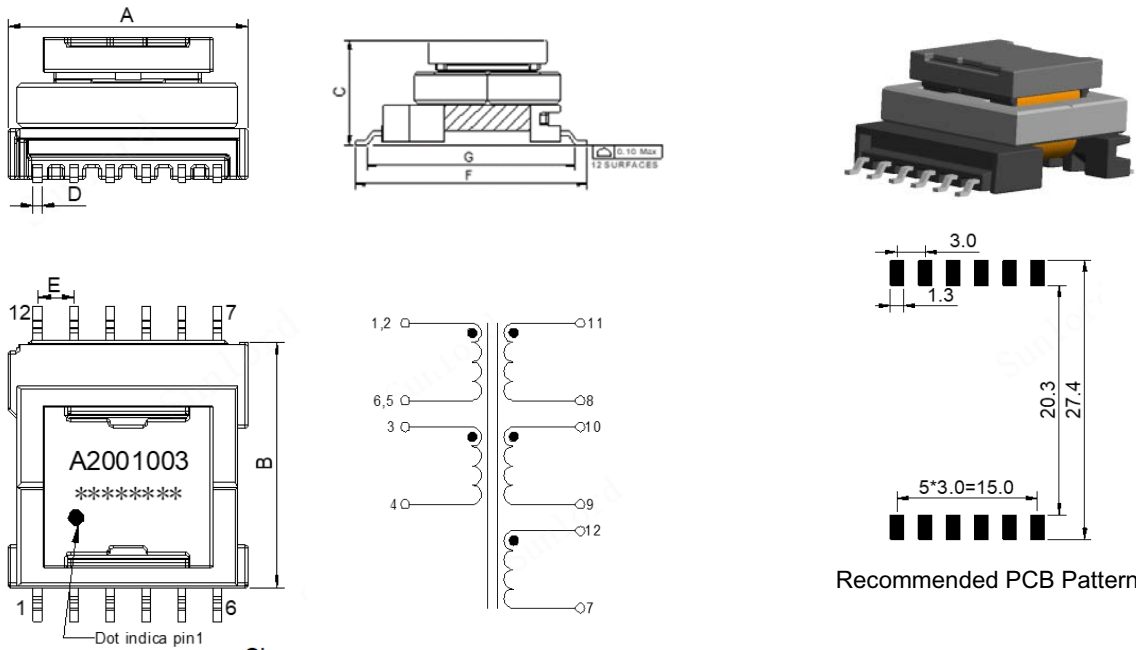


Recommended PCB Pattern

Unit: mm

A	B	C	D	E	F	G
16.0 Max.	17.00 Max.	12.0 Max.	0.70±0.10	2.5±0.20	22.6 Max.	14.0 Ref.

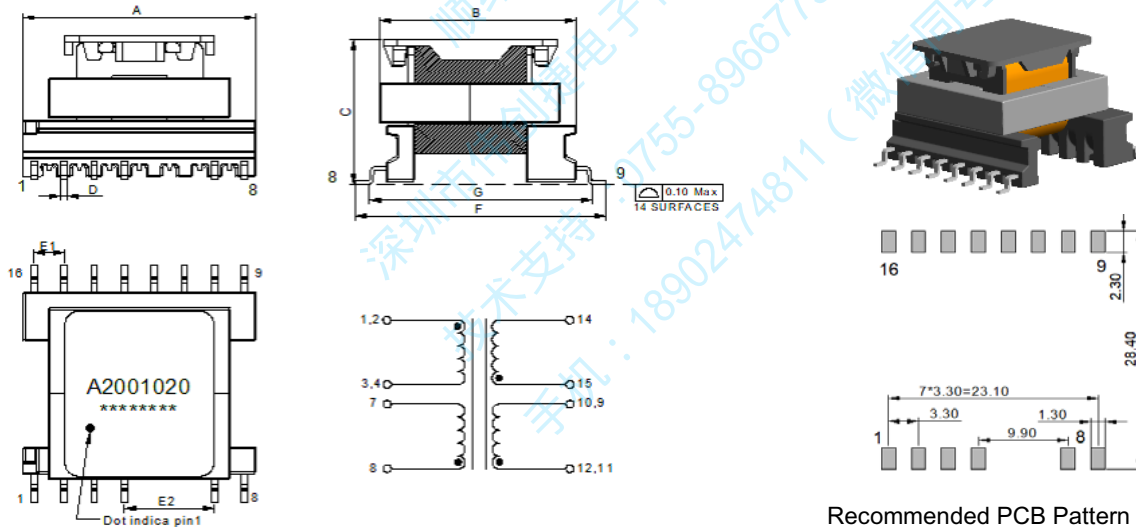
## ATWPEF182012B Series



Unit: mm

A	B	C	D	E	F	G
20.2 Max.	20.3 Max.	12.0 Max.	0.70±0.10	3.0±0.15	26.4 Max.	22.8 Ref.

## ATWPEF202217B Series



Unit: mm

A	B	C	D	E1	E2	F	G
25.85 Max.	22.8 Max.	17.3 Max.	0.70±0.10	3.3±0.20	9.9±0.3	27.8 Max.	24.4 Ref.

## CUSTOMIZED PRODUCT PRESENTATION

We can customize the Winding Electronics Transformers according to AEC-Q200 standard or your requirements.

### Remark:

- ※The picture is for reference and the real product may be different.
- ※Recommended keeping conditions : 10°C~30°C, 70%RH (Max.)
- ※We can customize products according to your requirements. Please contact your local sales.