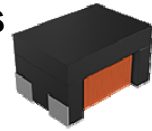


# Wire Wound Chip Common Mode Choke Coil –AMCW-S Series

Operating Temp: -40°C~+125°C



## FEATURES

- Small size, high reliability
- High quality, fast delivery, low cost
- Support vehicle signal transmission interface (USB2.0, USB3.0, HDMI2.0), support 3D transmission, meet higher resolution, refresh rate and color depth, support 1080P above playback
- AEC-Q200 verified

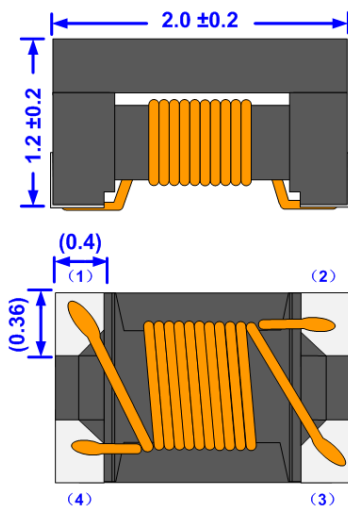
## APPLICATIONS

- Automotive USB 2.0/HDMI signal transmission

## PRODUCT IDENTIFICATION

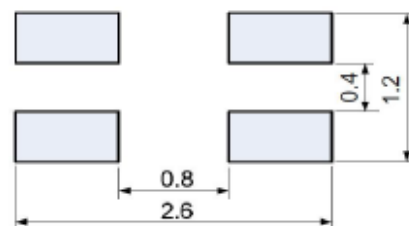
<u><b>AMCW</b></u> ①	<u><b>2012</b></u> ②	<u><b>S</b></u> ③	<u><b>-2</b></u> ④	<u><b>-900</b></u> ⑤	<u><b>T</b></u> ⑥																				
①	②		③	④																					
<table border="1"> <tr><th colspan="2">Type</th></tr> <tr><td>AMCW</td><td>Winding Type Common Mode Choke Coil</td></tr> </table>		Type		AMCW	Winding Type Common Mode Choke Coil	<table border="1"> <tr><th colspan="2">External Dimensions (L×W) (mm)</th></tr> <tr><td>2012 [0805]</td><td>2.0×1.2</td></tr> </table>		External Dimensions (L×W) (mm)		2012 [0805]	2.0×1.2	<table border="1"> <tr><th colspan="2">Code</th></tr> <tr><td>S</td><td>Signal</td></tr> </table>		Code		S	Signal								
Type																									
AMCW	Winding Type Common Mode Choke Coil																								
External Dimensions (L×W) (mm)																									
2012 [0805]	2.0×1.2																								
Code																									
S	Signal																								
④	⑤		⑥																						
<table border="1"> <tr><th colspan="2">Number of Lines</th></tr> <tr><td colspan="2">2</td></tr> </table>	Number of Lines		2		<table border="1"> <tr><th colspan="2">Nominal Impedance(Ω)</th></tr> <tr><th>Example</th><th>Nominal Value</th></tr> <tr><td>670</td><td>67</td></tr> <tr><td>900</td><td>90</td></tr> <tr><td>181</td><td>180</td></tr> <tr><td>361</td><td>360</td></tr> </table>		Nominal Impedance(Ω)		Example	Nominal Value	670	67	900	90	181	180	361	360	<table border="1"> <tr><th colspan="2">Packing</th></tr> <tr><td>T</td><td>Tape &amp; Reel</td></tr> </table>		Packing		T	Tape & Reel	
Number of Lines																									
2																									
Nominal Impedance(Ω)																									
Example	Nominal Value																								
670	67																								
900	90																								
181	180																								
361	360																								
Packing																									
T	Tape & Reel																								

## SHAPE AND DIMENSIONS



### Recommended Land Pattern

Unit: mm



## SPECIFICATIONS

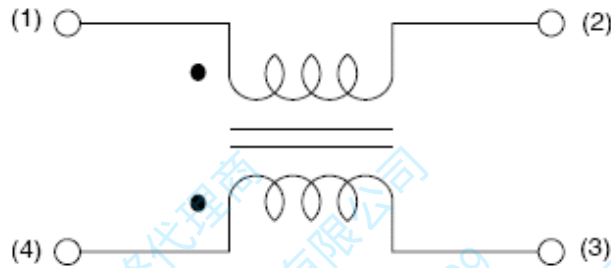
### AMCW2012S TYPE

Part Number	Common Mode Impedance @ 100MHz	DC Resistance	Rated Current	Rated Voltage	Insulation Resistance
	±25%	Max.	Max.	Max.	Min.
Units	$\Omega$	$\Omega$	mA	Volts	M $\Omega$
Symbol	Z	DCR	I <sub>rms</sub>	V <sub>DC</sub>	IR
AMCW2012S-2-670T	67	0.25	400	50	10
AMCW2012S-2-900T	90	0.35	330	50	10
AMCW2012S-2-181T	180	0.35	330	50	10
AMCW2012S-2-361T	360	0.45	280	50	10

1. Storage temperature range (packaging conditions): -10°C~+40°C and RH 70% (Max.)

※: Products with other electrical characteristics can be provided upon customer's request. Please contact your local sales.

## EQUIVALENT CIRCUIT



## TYPICAL ELECTRICAL CHARACTERISTICS

### Impedance vs. Frequency

#### AMCW2012S TYPE

